

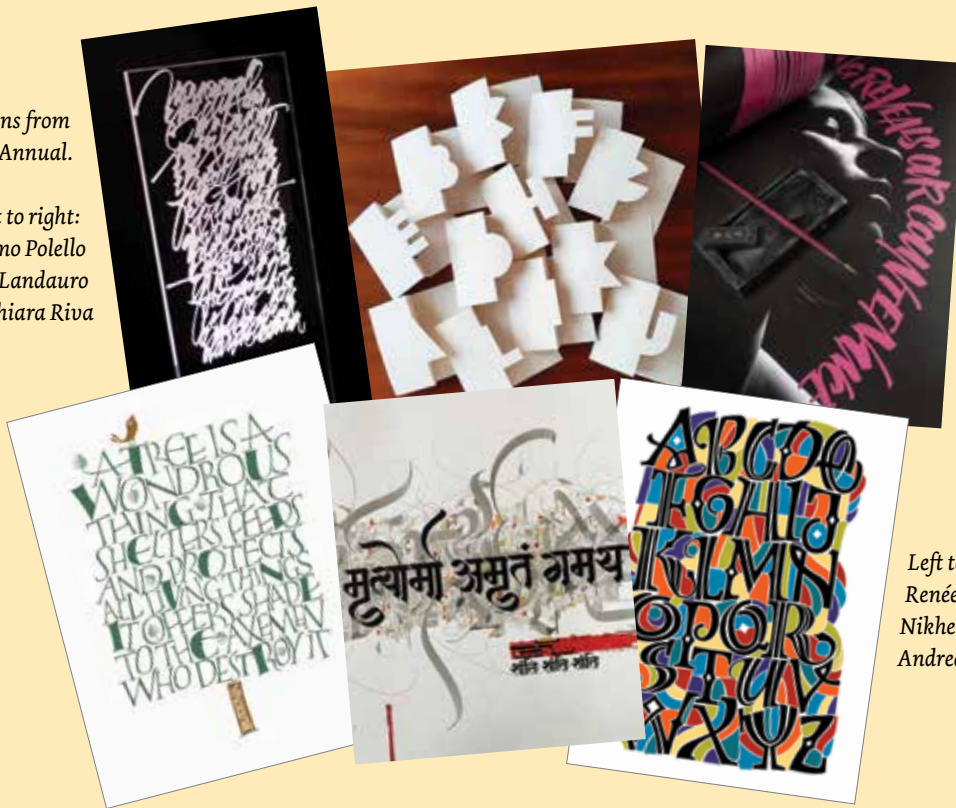
---

# Letter Arts Review

Our Annual Juried Issue showcases fine lettering  
from across the world.

*Selections from  
last year's Annual.*

*Left to right:  
Massimo Polello  
Lisette Landauro  
Chiara Riva*



*Left to right:  
Renée Alexander  
Nikheel Aphale  
Andrea Wunderlich*

# Call for entries

Letter Arts Review • The Annual Juried Issue **2025**

---

---

## Call for Entries

Letter Arts Review  
Annual Juried Issue

2025

*This is a call for original  
works that employ  
custom lettering or  
forms rooted in the art  
of writing.*

This year's deadline  
for entries is:

December 15, 2025.

---

### Eligible categories include:

Traditional and nontraditional lettering  
Calligraphy  
Drawn and painted letterforms  
Letterforms created digitally  
Original type design  
Letter carving  
Asemic writing  
Gestural mark-making  
Graphic design  
Book art  
Fine art rooted in written forms  
Sculptural work rooted in written forms

*We welcome work in all world scripts.*

*Please note that our focus is on original lettering  
made by the artists; work that only uses existing  
typefaces is not eligible.*

*Works created since **January 1, 2022**, are eligible  
(except those previously published in Letter  
Arts Review). The works selected will be  
published in the Annual Juried Issue 2022.*

---

## How to enter

*You may submit work  
online or by mail.*

*The digital option is  
preferred.*

Fee per work entered:  
**US\$15.**

### Digital entries:

Find us online at:  
**LetterArtsReview.com**

You will be asked to fill in the entry form online with your contact and payment information. Once your payment has been received, you will be sent a dedicated email for the Annual Juried Issue 2022. Use that email to send us images and information about the works you wish to enter. Full instructions appear on the web page.

If you have any questions about entering your work via our online portal or encounter technical difficulties, contact us at [info@LetterArtsReview.com](mailto:info@LetterArtsReview.com)

### Mail entries:

If you prefer, you may send us your work by mail. Send your entries to:

*Sea-Hill Press Inc.  
LAR Annual Juried Issue  
214 N. Third St., Suite A  
Leesburg, FL 34748 USA*

Mail entries should include physical prints of the works you wish to enter. These can be photographs, digital prints, or prints made from your own computer. On the back of each print, please write your name and the title of the piece.

Please enclose a sheet with your contact information, including:

*Your name  
Mailing address  
Telephone and email  
Number of entries*

In the United States, you may enclose a check or pay by credit card. In all other countries, please pay by credit card or PayPal.

For each work you are entering, please provide:

*Title of the piece  
Brief description of the work*

Packages mailed from outside the United States should be marked "Material for contest entry. No commercial value."

Entries will not be returned. Do not send original artwork.

If you have any questions, contact us at [info@LetterArtsReview.com](mailto:info@LetterArtsReview.com)

---

---

# Details

## **Entry fees:**

A one-time fee is payable for each entry when you submit your entry. The rate is **US\$15** for each work submitted.

Payments can be made by credit card or PayPal. Mail-in entries from the United States may also be paid by check.

## **Notifications:**

We will contact you by e-mail once we have received your entries. Once the judges have made their selection, we will contact you again by e-mail to inform you whether your piece has been chosen.

## **If your work is selected by the jurors:**

We may ask you to have your work rephotographed by a professional art photographer to provide the best image for reproduction.

We will ask for more information about your work: media used, dimensions, author of the text (if any) and its source, and client (if any).

We will also ask for a brief biography.

Each selected entrant receives a complimentary copy of Annual Juried Issue 2025.

## **Copyright:**

If you have used copyright text or images, be aware that, if your work is selected, you will have to obtain permissions before we can publish it.

---

---

## Frequently asked questions

### **Do I need to have my work professionally photographed to enter it in the competition?**

No. As long as your images are clear, well-lit, and in focus, they should be sufficient for the jurors to make their selection. Works that are chosen for the Annual Juried Issue 2022 may need to be professionally rephotographed for reproduction in the magazine.

### **How many images should I send of a work?**

One image printout per entry is the most common. For larger works, an overall image and one or two details that focus on the lettering would be appropriate. Three-dimensional works—especially those that can be configured in different ways—are best shown with a series of 3-4 photographs. Bookworks benefit from multiple images: one that shows the work as a whole and a selection of spreads from the inside. It is not necessary to send images of every spread in a book.

### **I have several works that form a series. Should this be one entry, or should each piece be a separate entry?**

If the works in the series are always meant to be shown together, then the whole set is a single entry, and the judges will consider them as a unified set. If, on the other hand, the individual pieces in the series could be sold or exhibited separately, then each piece is an entry of its own, and the judges will consider each one individually.

### **How should I submit a project that is the product of a group of people working together?**

One person from the group should take the role as the contact person for the entry. When that person fills in the entry form, they should indicate that the work is a group project and provide the name of the group and the names of the individual participants.

### **For further information:**

If you have questions about how to prepare your entry, contact the editor, Christopher Calderhead, at [christopher@LetterArtsReview.org](mailto:christopher@LetterArtsReview.org).

If you have questions about how to pay for an entry or any other questions, contact [info@LetterArtsReview.com](mailto:info@LetterArtsReview.com)

### **Please note:**

*Submission of an entry to the Annual Juried Issue 2021 acknowledges the right of Letter Arts Review to use the image for publication and promotional purposes, and that the entrant has obtained any necessary copyright permissions for text or images.*

*Please note that we have discontinued marking entries with letter codes.*

---

---

## About Letter Arts Review

*Letter Arts Review* was founded in 1982.

It began under the title *Calligraphy Idea Exchange*, and later *Calligraphy Review*. It assumed its present title in the early 1990s. It is published quarterly.

The magazine is dedicated to celebrating lettering artists and the work they do. It has a global scope, featuring work from every continent. And though its main focus is work in the Roman alphabet, it has featured lettering art in many scripts, including Chinese, Japanese, Korean, Hebrew, Arabic, and more.

Our pages reflect the many media which today's lettering artists use, from traditional ink on paper to sculptural or multi-media creations. And we support the many ways in which they approach their work, be it craft, commercial art, book art, vernacular lettering, or fine art.

*Letter Arts Review* is committed to continuing its tradition as a print publication. This allows us to have thoughtful, extended articles that explore topics in depth.

Christopher Calderhead is the editor and designer of the publication. Sea-Hill Press is the publisher.

